



INVENTRO POLYMERS

ABILITY TO DEFINE

MANUFACTURER & EXPORTER OF: RUBBER, P.T.F.E (TEFLON) & ENGINEERING PLASTIC ITEMS

Ultra high molecular weight polyethylene (UHMWPE)

UHMWPE not only reduces friction, wear, clogging and noise compared with metal, but also never needs lubrication. Virtually unbreakable, UHMWPE is especially formulated for optimum sliding characteristics and resistance to wear and abrasion. This means it is ideally suited to mechanical transmission support products and to flow promotion.

Key features and benefits of UHMWPE:

- Impact strength combined with light weight: It is easy to handle without special equipment (having a specific gravity of 0.93).
- Physiologically inert: Approved for food applications.
- Electrical insulation: It is a good insulator, with very high dielectric Strength.
- Weatherproof: It doesn't absorb water.
- Chemically resistant: It resists corrosive material (such as sulphuric acid, caustic soda).
- Abrasion resistant: Rated better than carbon steel for sliding abrasion applications.
- Low coefficient of friction: It does not require lubrication.

Easy slide Linings

UHMW-PE provides benefits for product storage; also with the heavy duty trucking industry, in the form of liners for tanks, bins and truck trays. In industrial sectors ranging from fine foods to mining, operators can solve the problem of handling cohesive, wet or sticky materials with the use of UHM.

Applications : DCP Conveyors Products

- Beverage – bottle filling lines for brewery, soft drink, juice and wine
- Canning – filling of cans (pet food, fruit and other food products)
- Packaging of glass, PET, cans and other packaging media
- Dairy – for bottle filling and handling of products in tubs, jars and crate handling
- Bakery – handling of crates, bread tins and packages
- Food handling of different packaged food products
- Pharmaceutical – bottle, tube and jar filling lines
- Chemical – filling of cans, drums and other packs
- Printing – handling of bound printed matter



REG OFFICE: A-701, Jeevan Saukhya, M.G X Rd No. 2, Bh. BMC Office, Kandivali –W, Mumbai- 400067, India.
FACTORY (RUBBER DIV.) Kandivali-E, Mumbai-101
FACTORY (PTFE DIV): Valiv, Vasai, Thane, Maharashtra,
Fax: 022- 2886 6033 , Mobile: 0 9323 101072 Website: www.inventro.net : E-mail: info@inventro.net



INVENTRO POLYMERS

ABILITY TO DEFINE

MANUFACTURER & EXPORTER OF: RUBBER, P.T.F.E (TEFLON) & ENGINEERING PLASTIC ITEMS

UHMW Chain Guide

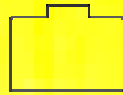
Chain Guides provide wear surfaces for chains used on conveyors, packaging machinery and other equipment. Reduces friction, protects surfaces and extends chain life. Standard material is natural UHMW-PE. Standard length is 10 feet. In addition to the standard styles shown here, made-to-order guides are available for nearly any type of chain, including flat-top conveyor chains.



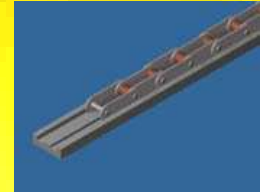
Style A



Style B

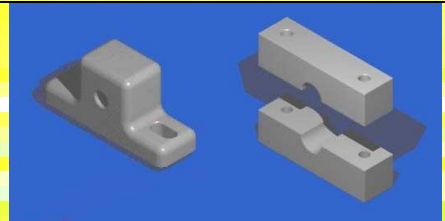


Style C



Pillow Block / Split Pillow Block Bearings

These UHMW pillow block bearings are an excellent alternative in food and washdown applications. They are FDA approved, provide a natural self-lubricating surface and are corrosion resistant.



Standard Trax

Corner and Straight track are designed to work with flat-top conveyor chain. They target the food and bottling industries. The corner track is a 90 degree angle, offered with or without extensions (4" straights). The straight track is provided in a 10 ft length. Standard style is tab design. Standard material is UHMW-PE. Custom curves and straights available upon request. Drawing may be needed to quote.

Slide Trax are available in standard sizes for all Side Flexing Chains. Chain sizes include 879T, 880T, 881T, 882T, 1873T and 1874T.



Gears

Inventro Polymers makes spur gears on a made-to-order basis. Gears from 1" up to 24" diameter can be machined to your specifications. Lead time is normally about a week. We can finish bores and provide keyways and other details to your specifications.



Gear Rack

Nylon Gear Rack is an excellent alternative for light-duty applications.

The gear racks provide noise reduction and are corrosive resistant. They are available in 14-1/2 and 20 degree pitch angles. Standard length is 4 feet long. Must specify if matched ends are required.

Sprockets

Inventro Polymers also makes sprockets. Polypropylene, Delrin, and Nylon are the most popular materials. We can provide finished bores with keyways and setscrews according to your specifications. These are high quality sprockets machined from solid billets of material; not to be confused with light duty injection molded sprockets.



Custom Profile Machining for Plastic Star Wheels

Custom fabrication enables our customers to avoid expensive extrusion tools and high minimum runs (very useful for prototype and short-run applications). Machined profiles for our plastic star wheels can be made to closer tolerances than extrusions.

Besides plastic star wheels we also manufacture a variety of plastic products including tracks, bearings, chain and belt guides.